

### Multi-Services Bracketry and Frame Solutions



**Off-Site Assemblies** – The professional planning and pre-assembly service for frames and bracketry

In cooperation with representatives from each of the different trade contractors, the Sikla Technicians can develop support solutions that integrate all services to a common bracket or frame pre-assembly. The final bracket or frame is calculated according to the specific static load requirements of the combined services loading. The bracket or frame is then pre-assembled and delivered to site according to the required works installation programme. Pipework and electrical containment can then be installed to the pre-assembled bracket quicker on-site, leading to a more productive workforce, easier commissioning and less rework of the complete installation.

Certainty of programme and quality; through simplification of site operations, reduced dependence on weather and the reduction of defects, based on controlled factory-based assembly processes.

Safety and working conditions; Transferring such installation work off-site into a controlled environment improves safety due to large reduction in the number of manual installation operations subsequently required on-site.

Documentation (Part list, Static Calculation, AutoCad)

**sikla**

Stückliste Halterungsgestell

Pos.	Artikel	Menge	Artikel Nr.
1	Deckenstiel: WBD-Halter 50/40 D, Fußplatte nicht Rautenformat sondern parallel zur Schiene	1	100045
2	M-Schiene 50/40/3.00 Dv - 0,47m gerechnet -	0,47	136882
3	1 Ausleger: Halter Wbd 40/22 D V	1	146469
4	M-Schiene 40/22/1.70dv - 0,65m gerechnet -	0,65	136864
5	Hakenkopfschr Hz1 M10x 20	1	152024
6	Sechskt-Schr 8.8 M10x120	1	138644
7	FLANSCHMUTTER M10 DIN6923	2	158738
6	Querschienen: Flanschmutter M12	2	126409
7	Hakenkopfschr Hz2 M12x 25	4	152167
8	Sechskt-Schr 8.8 M12x120	1	114750
9	Montagewinkel 90/60/90 V	2	114820

**la**

9268

0636

5212

0645

4895

1944

5414

8738

1711

4868

4840

7445

Auslegerkonsole Platte seitenverkehrt. Blatt 3

SYSTEM

BEANSPRUCHUNGEN UND VERFORMUNGEN DES TRÄGERS : MS 40/45/2

Biegemomente : Mmax. = 0,039 kNm ; Mmin. = -0,381 kNm  
 Durchbiegungen : Ymax. = 1,48 mm ; Ymin. = -0,01 mm  
 Biegespannungen : σmax. = 131 N/mm<sup>2</sup>; σzul. = 160 N/mm<sup>2</sup>  
 X-Verschiebung : Xdef = 0 mm

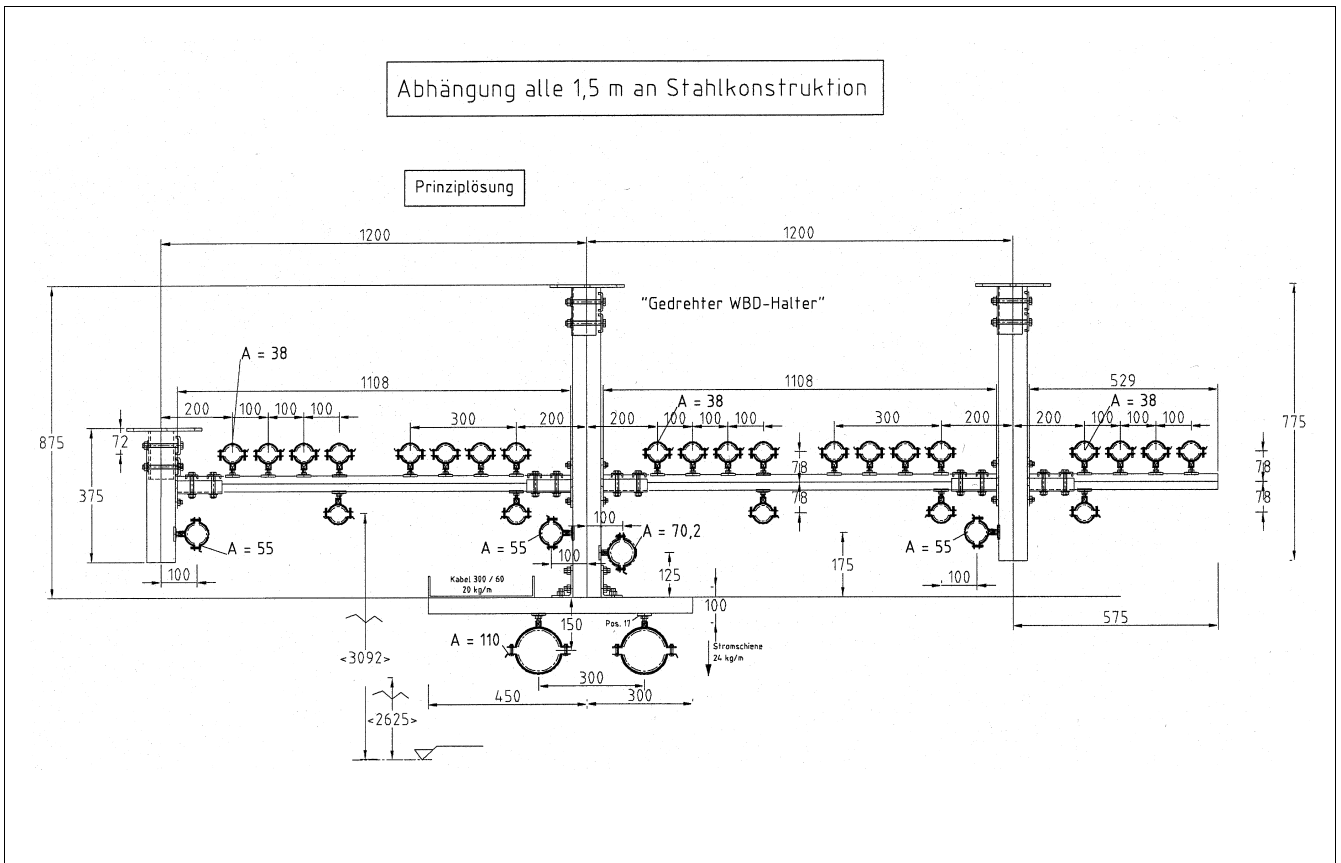
Die max. Durchbiegung ist kleiner als 1/300 der Trägerlänge.

HINWEISE UND WARNUNGEN :

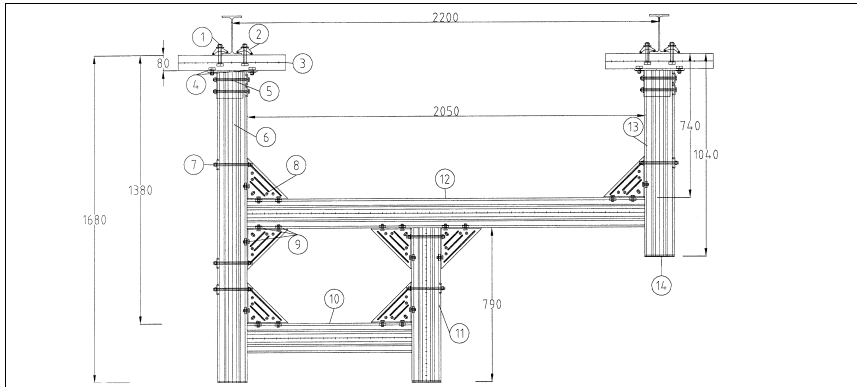
Bei Dübeln der Lastklasse 0.8 kN (Schlaganker, Profilnägel) bitte die besonderen Auflagen des Zulassungsbescheides (z.B. Redundanz) beachten !

Diese Statik ist nur gültig für die hier in Text ausgewiesenen baustatischen Randbedingungen.

Statikprogramm: Dr.-Ing. Meier-Dörning	85099 CS097	85098 LS089	P5031	RS019	DATE:
Planungsreferenz: SIKLA GmbH	Hausen o.V.	Kontrollzeichen			AUSG_091_02K



### Modular Frame Construction



M&E services supports built out of bracketry assembly systems, is an ever more frequently used option in fastening technology. Universal practicability, material selection to a reasonable price and calculable loading capacities are only a few reasons for this positive result.

More complex construction assemblies consisting of several individual parts are normally planned on site. These operations are often carried out under more onerous conditions like low temperature, or lack of space. Loss of productivity can be the result.

Our tailored pre-assembly solutions help to solve these problems. Sikla offer an economic service for the installation contractor : we carry out the design, dimensioning, static load checks and deliver the pre-assembled construction for the final on-site installation according to the works programme requirement. The logistics and loss of productivity for countless individual parts is unnecessary.

Cost-effective construction is possible from only a few parts - test us!

The Sikla range of services for off-site assembly of brackets and frames:

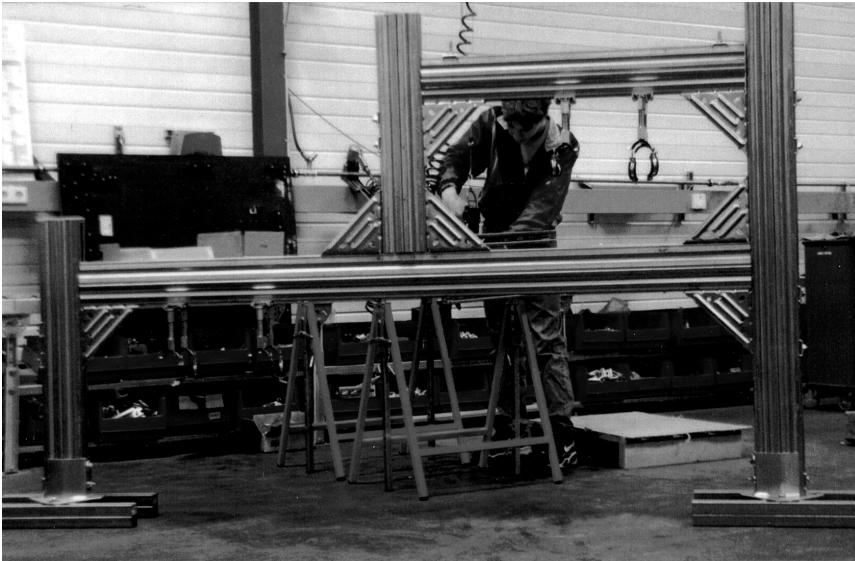
Sikla construct according to your specific fixing requirements for building services and industrial installation work -

You save time and money, from design through to final installation.

Your advantage

- ◆ Sikla supports you through the design and layout process.
- ◆ Sikla constructs according to customer requirements from as little as one assembly.
- ◆ Sikla manages all pre-assembly logistics and handling.
- ◆ Sikla guarantees and maintains cost predictability throughout the process

## From pre-assembly to site



Larger frame constructions, special solutions, and modules can be delivered by carrier directly to site : Just in time!

Test our service; our customer consultants will be pleased to advise you.



By the way...

We know our products.

This means we can construct the pre-assemblies very efficiently, and with our factory assembly processes we can work more efficiently than on site.

