

sikla

Prefabrication Service

with manufacturer's warranty





Prefabrication service

Prefabricated assemblies offer enormous potential savings and are an indispensable element of modern installation.

We produce clever, customer-specific fastening solutions for building technology and industrial construction. This minimises the assembly work and thus reduces construction time and provides calculation security. Our expansive pre-production depth enables supply of custom, project-specific small series.

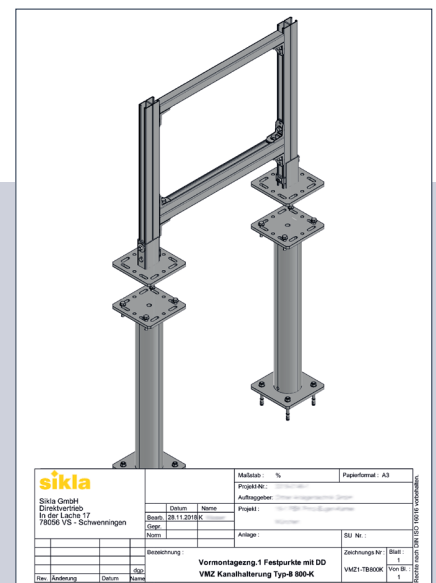
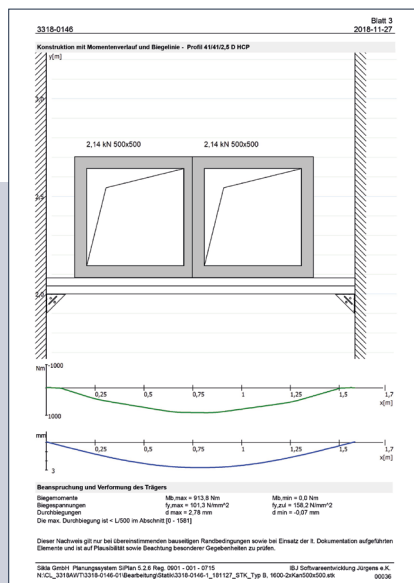
Reduced planning time and minimised assembly works are key competitive factors: Prefabricated customer-specific fastening assemblies delivered just-in time to the construction site and ready for installation.

sikla

3318-0146 01, 16-1 PEK, München
Vormontage Festpunkthalter mit Dachdurchdringung

kmesse@sikla.de
Datum: 28.11.2018

| Pos. | Artikel | Menge | Einheit | Artikel Nr. | Gewicht |
|--------------------------------|---------------------------------------------|-------|---------|-------------|------------|
| 8.0.0 Typ B-1000 / K | | | | | |
| Zusätzliche Teile | | | | | |
| | WBD-Halter C 4141-45 D C0 HCP | 2 | STK | 179561 | 10,32 kg |
| | M-Geh 4141/2,5 D 6m HCP | 2,265 | MTR | 166748 | 10,74 kg |
| | 2 Stk. weksseitiger Zuschchnitt L-ca. 875mm | | | | |
| | M-Sch 4141/2,5 6m HCP | 0,915 | MTR | 161497 | 2,16 kg |
| | 1 Stk. weksseitiger Zuschchnitt L-ca. 915mm | | | | |
| | Abdeckkappe ADK 41/41 | 4 | STK | 177689 | 0,04 kg |
| | Winkel 90° Stahl HCP (80) | 6 | STK | 192737 | 0,71 kg |
| | Sechskantsch. SKT M10x 25 HCP | 12 | STK | 162566 | 0,24 kg |
| | Gewindplatte NT CC41-M10 HCP | 12 | STK | 166284 | 0,36 kg |
| | Schließengarni SÄL 41 | 1,28 | MTR | 101189 | 0,55 kg |
| | 4 Stk. weksseitiger Zuschchnitt L-ca. 320mm | | | | |
| Zusätzliche Materialien | | | | | |
| | Dachdurchführung AV, H=50 | 2 | STK | KE117170 | 43,40 kg |
| | Bohranker AN BZ plus 12/15/35/110 | 8 | STK | 114147 | 0,80 kg |
| | Sechskantsch. SKT M12x 60 HCP | 8 | STK | 164153 | 0,48 kg |
| | U-Scheibe US 12/125 HCP | 16 | STK | 162355 | 0,16 kg |
| | Sechskantsch. SKT M12x 60 HCP | 8 | STK | 162382 | 0,08 kg |
| Gesamtgewicht pro Konstruktion | | | | | 70,03 kg |
| Bedarf | | | | | 1190,58 kg |



parts list

structural analysis

CAD Drawing



Your advantages at a glance

- ◆ Simple quotation processing
- ◆ Reduced planning time
- ◆ Minimised assembly work
- ◆ Shorter construction time
- ◆ Efficient relief of technical staff
- ◆ Calculation security with fixed end costs
- ◆ Guarantee with factory prefabrication
- ◆ Just-in-time delivery to the construction site
- ◆ Consistent quality
- ◆ No residual material



The logo for Sikla, featuring the word "sikla" in a bold, white, sans-serif font. A small white diamond shape is positioned above the letter 'i'.

Sikla GmbH
International Sales
In der Lache 17
D-78056 VS-Schwenningen
Phone +49 7720 948 0

www.sikla.com